

# AR DI "IŠGELBĖS ŠVIETIMA"

VILNIAUS PRIVATI GIMNAZIJA  
DR. AGNĖ LIUBERTAITĖ - AMŠIEJĖ

??????????

Rimtai

**WABOON!**





# DI NĒRA NAUJA



**Photo Math**

$(x = 3)$   
 $\frac{\sqrt{x^2 - 2x}}{3(x-15) + \frac{15}{y}(7-5x)} = \frac{3\sqrt{3}}{236}$

$(x = 2)$   
 $4x^2 + \frac{24x}{(x-8)} + \frac{(5-x)}{2} = \frac{2029}{2}$

$(x = \frac{2}{3})$   
 $2^3(x - \frac{3}{4}) - 12 = 2$

**10 BEST MATHS APP**

$x = -5, -2$

$3x^2 + 9x - 2 = 0$

$-9 \pm \sqrt{9^2 - 4 \times 3 \times (-2)}$

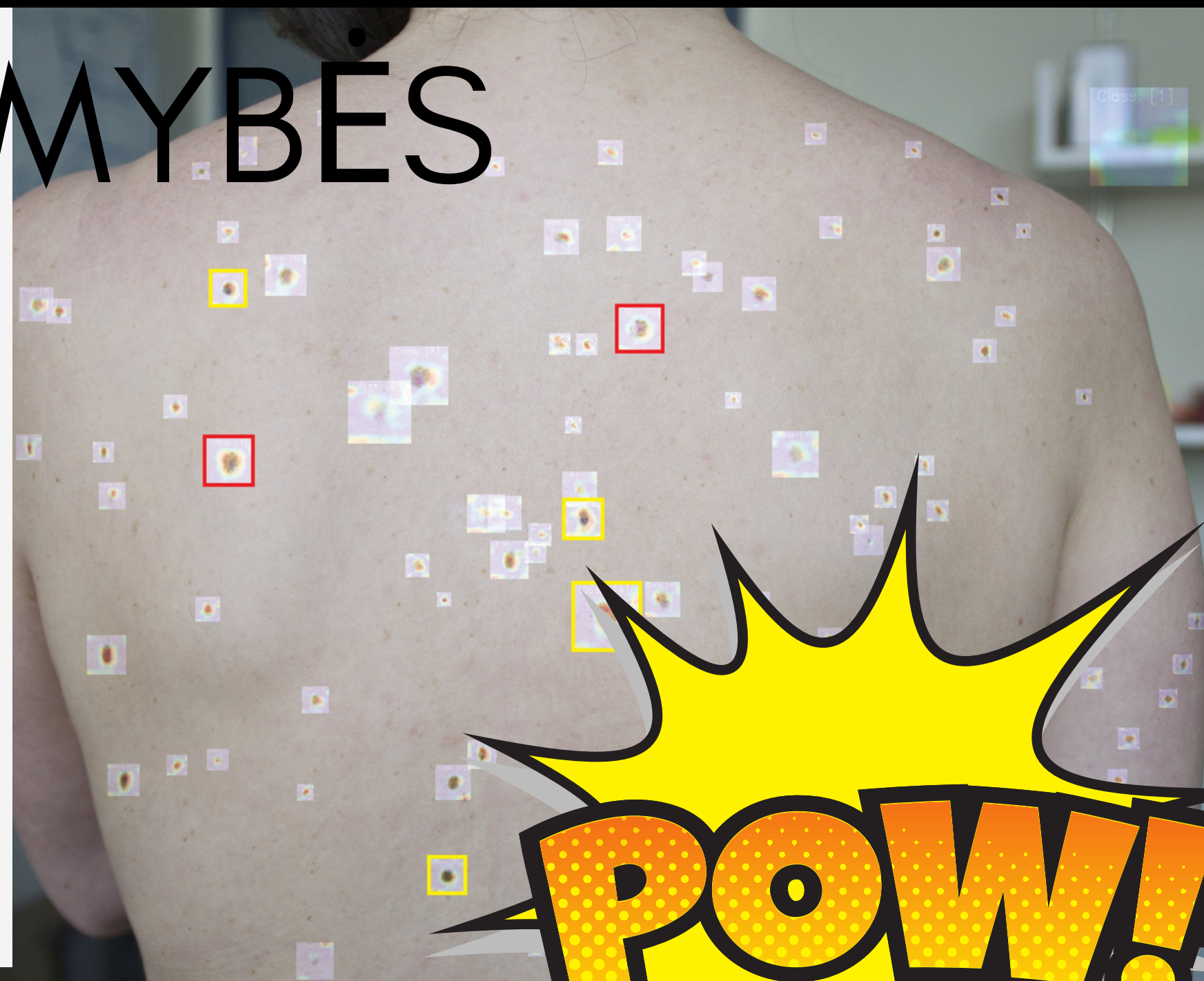
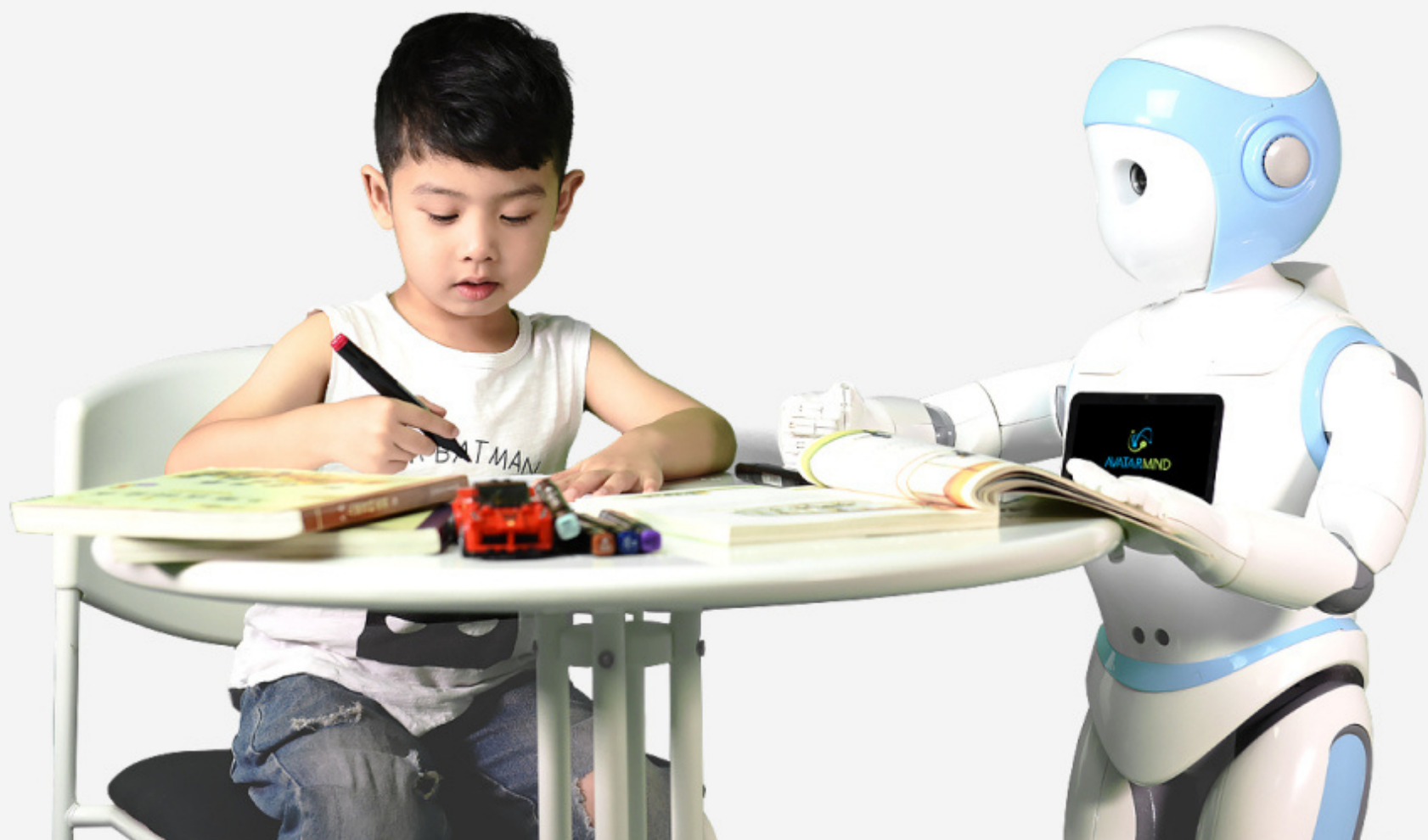
$2 \times 3$

$x = \frac{-9 \pm \sqrt{105}}{6}$

Icons:  $2 \times 2 = 4$ ,  $x + - +$ ,  $\sqrt{x}$ ,  $\pi$

# ATVERIAMOS NAUJOS

## GALIMYBES







**VROOOOM!**



**TING!**

